



BIG FLAT NEWS



August 2023

www.bigflatelectric.com



Pictured L to R: Big Flat Electric President Alan Wasson; Gretchen Boardman; NorVal Board President Ron Redding.

GRETCHEN BOARDMAN:

ONE GM, TWO CO-OPS

BEGINNING July 1, 2023, Big Flat Electric Cooperative General Manager Gretchen Boardman started serving as the general manager of NorVal Electric Cooperative.

“One of my favorite Cooperative Principles is Cooperation Among Cooperatives,” said Boardman. “By choosing to helm a second Montana co-op, I look forward to helping the members and staff in whatever ways I can.”

Malta’s Big Flat and Glasgow’s NorVal have much in common: both are non-growth cooperatives in rural Montana, and neither has a large industrial load. On July 1, Boardman celebrated her seven-year anniversary heading Big Flat, and says she is up for this new endeavor. She emphasized that this is neither a merger nor will any jobs be displaced.

“NorVal needs a manager, and I am happy to step up to the challenge,” Boardman said.

Big Flat Board President Alan Wasson said “It’s a win for NorVal, it’s a win for Big Flat and a win for Gretchen.”

Boardman is not the first to lead two Montana cooperatives—Jason Brothen currently serves as the CEO of both Mid-Yellowstone Electric Cooperative and Lower Yellowstone Rural Electric Cooperative. Brothen was the CEO of Lower Yellowstone in 2016, when the co-op joined Mid-Yellowstone in a shared service agreement for him to manage the two co-ops.

Going forward, Big Flat and NorVal will continue their day-to-day business with their members, and Boardman’s role will be to help each utility continue to follow the Cooperative Principles. RM

PHOTO SPOTLIGHT

PHOTO BY LEIF SORENSEN

BIG FLAT LINEMAN





Big Flat Electric directors and management stopped for a picture on the top of Fanning Hill during the Directors Day tour in late June. Pictured left to right, Directors Patty Quisno, Kevin Koss, Alan Wasson, Roger Solberg and Duane Klindworth; Line Superintendent Darren Demarais, General Manager Gretchen Boardman and Office Manager Kari Hammond. | **BIG FLAT PHOTO**

DIRECTORS DAY

BIG FLAT ELECTRIC DIRECTORS AND
MANAGEMENT GOT TO SEE SOME OF
THE BIG FLAT SERVICE AREA

In late June, the Big Flat Electric Board of Directors and Management toured our service territory in the Harb, North Hinsdale, Frenchman Valley, Whitewater, Loring South Sag and Fanning Hill areas. Throughout the tour, they marveled in the beautiful green countryside and growing crops from all the moisture this year. Directors Day has become an annual event they all enjoy.

LET THERE BE LIGHT

Big Flat Electric recently finished installing 101 street lights in the Hays/Lodgepole area.



Committee will meet to nominate directors

EVERY year members have the opportunity to vote for directors at the annual meeting. Directors serve for a three-year term and can be re-elected to serve additional terms. The directors up for re-election this year are Alan Wasson-District 3 (Loring/Saco/Whitewater area), Roger Solberg-District 5 (Malta area) and Kevin Koss-District 7 (Missouri River area). Big Flat Electric Cooperative's bylaws allow for director nomination by committee, by petition or from the floor at the annual meeting.

Big Flat Electric holds a committee meeting once a year to nominate directors for the upcoming election. A meeting of the nominating committee delegates will be held on August 31, 2023, at 6 p.m. at Big Flat Electric's headquarters building in Malta. This year's nominating committee members by district are: District 3 - Jason Erickson, Pete Lumsden, Matt Simonson; District 5 - Bruce Christofferson, Cody Oxarart, Roy Wyse; District 7 - Wayne French, Phillip Henderson, Lee Jacobs.

Being nominated at the nominating committee meeting is one of two ways names may be printed on the ballot at the Annual Meeting. If the nominating committee has already met, a member may turn in a petition, signed by at least 15 members, to the cooperative office not less than 15 days before the Annual Meeting. Nominations may also be taken from the floor during the Annual Meeting.

KEY BACK-TO-SCHOOL DATES FOR BIG FLAT AREA SCHOOLS

Big Flat Electric wishes good luck to all area students academically and in their extracurricular activities this 2023 – 2024 school year.

Malta

August 11 – First day of practice for HS Football, Cross Country, and Volleyball

August 23 – First day of School

Dodson

August 11 – First day of practice for HS Football, Cross Country and Volleyball

August 22 – First day of School

Hays/Lodgepole

August 10 – First day of practice for HS Football, Cross Country, and Volleyball

August 21 – First day of School

Whitewater

August 11 – First day of practice for HS Football, Cross Country, and Volleyball

August 16 – First day of School

Saco

August 11 – First day of practice for HS Football and Volleyball

August 16 – First day of School

Hinsdale

August 11 – First day of practice for HS Football, Cross Country, and Volleyball

August 16 – First day of School

Harlem

August 11 – First day of practice for HS Football, Cross Country, and Volleyball

August 21 – First day of School

Turner

August 11 – First day of practice for HS Football and Volleyball

August 21 – First day of School



Know what's below.
Call before you dig.



~Snowplow for Sale by Bid~

Older Working Snowplow

Sold as is.



Submit sealed bids to: Big Flat Electric Co-op., PO Box 229, Malta, MT. 59538. Bids need to be physically in the office by 5:00 p.m. on August 23rd, 2023.

If you mail a bid, you may want to verify that it is in the office by that date.

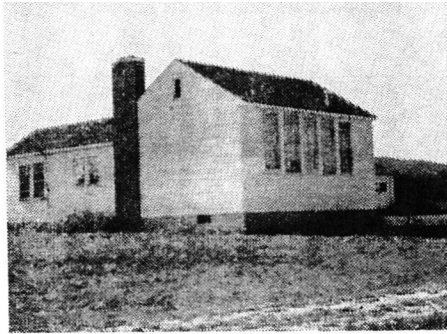
Call (406) 654-2040 for any questions.

Big Flat Electric reserves the right to accept or reject any bid.

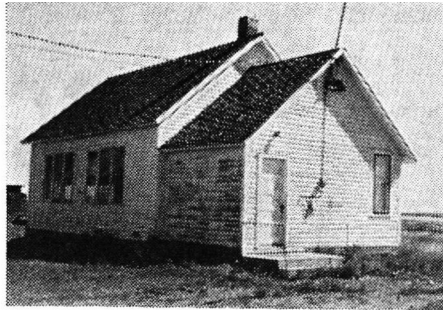
AUGUST 1964: *BFEC NEWSLETTER*

Big Flat Serves 22 Rural Schools With Electricity

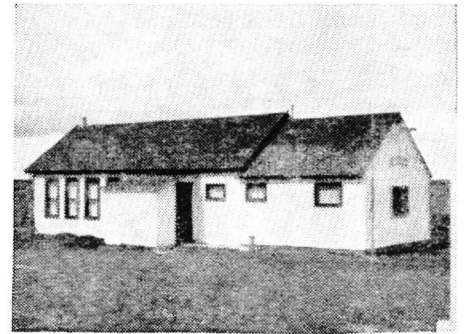
PART 1: MORE COMING IN THE FOLLOWING MONTHS



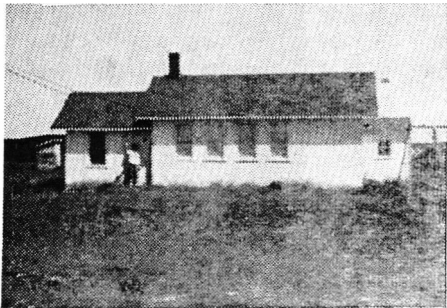
BEAVER CREEK School District No. 5, Phillips County. Teacher, Mrs. Utterback; Students, 6; School Board, Norman Jaynes, Dick Kalal, Lotta Franklin; Clerk, Mrs. Donna Holzhey.



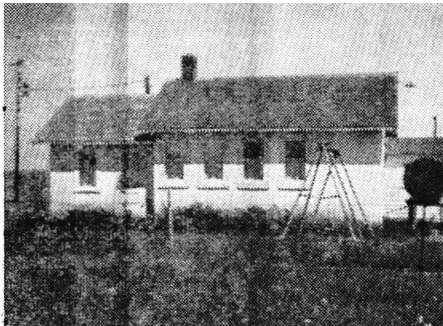
BERG School District No. 44, Phillips County. Teacher, Mrs. Mecklenburg; Students, 4; School Board, Jerome Lindner, Norman Hoover, Duane Olson; Clerk, Mrs. Robert Haser.



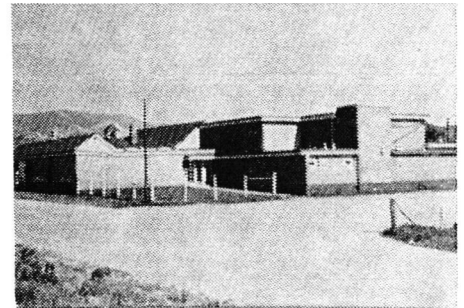
CREE CROSSING School District No. 9, Phillips County. Teacher, Mary Kernen; Students, 13; School Board, Arthur Stidolph, Larry Simpson, Mrs. Margaret Demontigny; Clerk, Mrs. Robert Stenswick.



EMOND School District No. 1-A, Phillips County. Teacher, Mrs. Hughes; Students, 4; School Board, Ray Cummings, Lloyd Knudsen, Fred Emond; Clerk, Mrs. Joseph Peigneux.



FIRST CREEK School District No. 6, Phillips County. Teacher, Mrs. Mae Bi-beau; Students, 9; School Board, Clarence Blunt, Don Robinson, Martin, Sandvick; Clerk, Mrs. Henry Nesbit.



HAYS School District No. 50, Blaine County. Teaching staff, 6; Students, 130; School Board, Dave Hawley, Jr., Robert King, Leonard Erickson; Clerk & Administrator, James Sosalla.

BOARD OF DIRECTORS

District 1	Duane Klindworth
District 2	Alan Van Voast
District 3	Alan Wasson, President
District 4	Betty Campbell, Sec. /Treas.
District 5	Roger Solberg, Vice President
District 6	Patty Quisno
District 7	Kevin Koss

General Manager: Gretchen Boardman



BIG FLAT ELECTRIC COOPERATIVE

SERVING BLAINE, PHILLIPS AND VALLEY COUNTIES

P.O. BOX 229 • MALTA, MT 59538 • WWW.BIGFLATELECTRIC.COM

A Touchstone Energy™ Partner
The power of human connections

CONNECT WITH US

OPEN WEEKDAYS 8 A.M. TO 5 P.M.

333 S 7TH ST E
MALTA, MT 59538
(406) 654-2040

**AFTER HOURS
OUTAGE:**
(406) 654-7400

PAYMENT OPTIONS:
1-833-368-2470 or
bigflatelectric.com