



BIG FLAT NEWS



June 2023

www.bigflatelectric.com



SCHOLARSHIPS AWARDED

BIG FLAT ELECTRIC ANNOUNCES 2023 SCHOLARSHIP WINNERS

BIG Flat Electric Cooperative would like to announce our 2023 Scholarship winners.

Brylee French, a graduate of Malta High School, is the winner of the \$1,000 Big Flat Electric Trade School Scholarship.

Recipients of Big Flat Electric's \$500 scholarships are Dakota Krass, Turner High School graduate; Kennedy Koss,

Malta High School graduate; Kirsta Meisdalen, Malta High School graduate; and Kylee Zander, Hays/Lodgepole High School graduate.

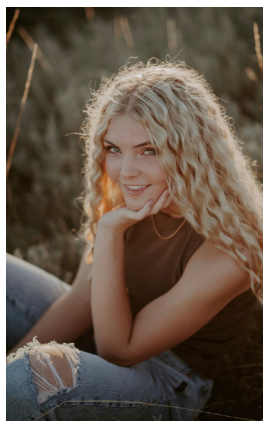
Meisdalen is also the recipient of the \$1,000 Basin Electric Scholarship.

Big Flat Electric congratulates all our service area graduates and wishes them well. 

Brylee
French

MALTA HIGH SCHOOL

\$1,000 Big Flat
Electric Trade School
Scholarship winner



Dakota
Krass

TURNER HIGH SCHOOL

\$500 Big Flat Electric
Scholarship winner



Kennedy
Koss

MALTA HIGH SCHOOL

\$500 Big Flat Electric
Scholarship winner



Kirsta
Meisdalen

MALTA HIGH SCHOOL

\$500 Big Flat Electric
Scholarship and
\$1,000 Basin Electric
Scholarship winner



Kylee
Zander

HAYS/LODGEPOLE
HIGH SCHOOL

\$500 Big Flat Electric
Scholarship winner



TWO KEY METALS

COPPER AND ALUMINUM, CRITICAL FOR THE ELECTRIC INDUSTRY, ARE SUFFERING A GLOBAL SHORTAGE

Column courtesy of **BORDER STATES ELECTRIC COMPANY**

Why the shortage?

The strong promotion and growth of green energy and transport is driving demand that will outpace supply. This supply shortage is caused by:

Mining and production: Investment and development is not occurring at the rate needed to meet demand over the next 2-7 years.

Rapidly increasing demand: The world has never increased production to what is being called for in such a short timeframe.

However, many elements are working against growth in demand – including global recession, inflation, impacts from the Russia-Ukraine war, turmoil in China, slowing of population growth and off-setting innovations – so global demand is likely to be softer than what is typically predicted. That being said, there will still be significantly increased demand and competition for more copper and aluminum.

Global supply factors

Low global inventory and the slow rate of development in mining and production will continue to result in supply shortages and volatility. In the United States, even with low-cost, clean energy, environmental and social challenges will impede permitting and limit growth in domestic mining and production.

China is the dominant producer for aluminum and copper, and it maintains that position through state-supported subsidies and a non-market economy approach to trade. This means that demand and supply changes in China



Copper and aluminum are the two most cost-effective, conductive metals used in capturing, storing and transporting electricity. Looking ahead, with the push for electrification of transport, low-carbon renewable energy and other factors, global supply-and-demand projections show that shortages for **copper, aluminum** and other minerals are expected. This will be especially prevalent in China, North America and Europe, where **90 percent of growth in demand** is expected to occur. | **FILE PHOTO**

result in large swings in global supply and prices. With China's struggling economy, water shortages and energy and emissions constraints, it may be motivated to limit its rate of investment, resulting in a cutback in production and shortfalls in global supply. The dominance and influence of China, coupled with its non-market economy behavior and security tensions, creates risk and volatility that is highly disruptive to copper and aluminum producers in other countries, which deters investment and development.

What it means: Tariffs and anti-dumping/countervailing duty orders are needed to protect domestic mining and production.

Recycling power

Recycling is going to play a major role in meeting future demand for copper and aluminum, making it critical to improve global recycling initiatives. Improving these initiatives could also help diminish the growing frustrations around **single-use plastics and packaging**.

As of today:

- Only half of all aluminum cans are

currently recycled.

- 35 percent of global production comes from recycled aluminum, which is expected to increase to 44 percent by 2035.

- 32 percent of global production comes from recycled copper, which is expected to increase by 50 percent in the next 20 years.

- Use of aluminum for packaging is replacing plastics due to the separation challenges and contamination in single-stream recycling.

Key takeaways

The United States is on a path where it will need to import more than 50 percent of its copper and aluminum needs. For this reason, copper should be added to the Critical Material List.

Trade – as we have known it the past 30 years – and the role of the WTO have changed significantly. Given the current conditions and changes in the supply chain, the United States will be dependent on global supply chains and trade relations with trusted countries that are committed to market-

See METALS, next page



Big Flat Electric Cooperative Director Patty Quisno won first place in White Bread, first place in Wheat Bread, second place in Specialty Bread and was awarded Overall Bread Winner recently at the Montana Seed Show in Harlem. | COURTESY PHOTO

BIG FLAT ELECTRIC DIRECTOR RISES ABOVE THE OTHERS

Patty Quisno takes home top bread awards at the Montana Seed Show

Big Flat Electric Cooperative Director Patty Quisno, entered her white, wheat and specialty bread in the Montana Seed Show held in Harlem in March.

She placed first in White Bread, first in Wheat Bread, second in

Specialty Bread and was awarded Overall Bread Winner.

Patty has spent many years perfecting her bread recipes and it shows. Congratulations to Patty and all of the other winners in both the adult and youth divisions. RM



BIG FLAT ELECTRIC PRESENTS AT SACO FIRE MEETING

The Saco Volunteer Fire Department invited Big Flat Electric Cooperative linemen Ross Hasler and Brenden Johnson to its April training meeting. Ross and Brenden explained to the firemen how far north and west Big Flat Electric powerlines go and which towns we provide power to. Also during their presentation, they explained what to do if there is a house fire and if a power pole is burnt.

Thank you Saco Volunteer Fire Department for the invitation. Safety is of great importance for Big Flat Electric members and others that may be in danger. RM

METALS

Continued from previous page

based trade and resilient supply. A coordinated strategy between industry, government and trusted countries is critical for stable and resilient supply. Understanding trade flows, potential bottlenecks/risks and setting targets at an industry and national level is also crucial for dependable supply.

While the above remains fluid, the bottom line is that the United States will be too slow in development of its own mining and production to supply what will be needed. Recycling and friendly/trusted trade relations and controls are key for reducing pressure and ensuring stable supply. RM

Happy Father's Day

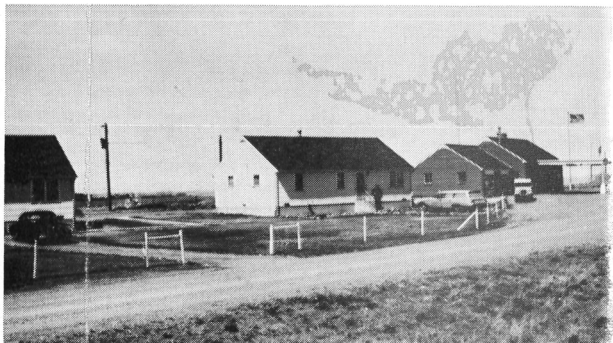
May this Fathers Day bring you
everything you desire and everything
you dream of. May success accompany
you in every step that you take.

Have A Blessed Father's Day



May 1964 – BFEC Newsletter

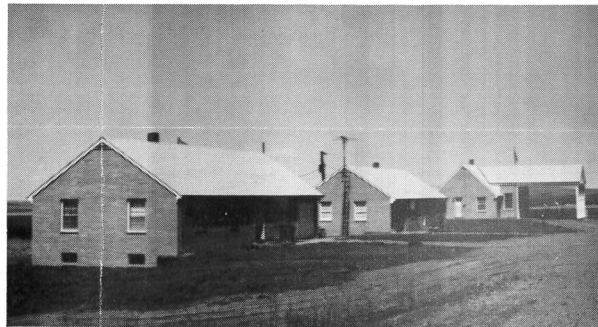
BIG FLAT ELECTRIC HONORS BORDER STATIONS DURING ANNIVERSARY OF 175 YEARS SERVICE TO THE U.S.



Office and Residences, U. S. Customs and Immigration . . .

\$87,000 project. The above picture shows the new brick office and two residences located on the U. S. side of the line at Morgan. The new office and residences were completed and put

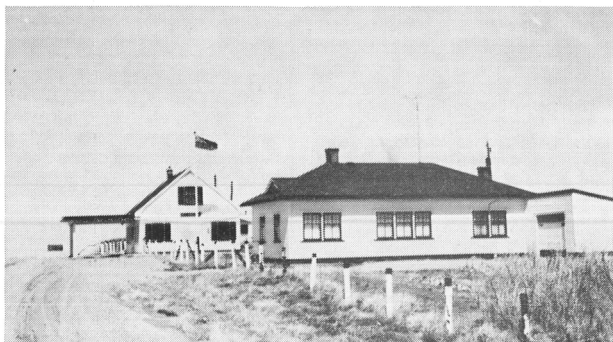
into service in October of 1963. The Big Flat Electric Cooperative serves electricity to these modern homes and office.



Turner Customs and Immigration Office and Residence . . .

The above picture shows a view seen by motorists approaching Canada from North of Turner, Montana. U. S. Customs and Immigration Office and Residence 12 miles north of Turner are served from the Big Flat Electric Co-

operative. The construction of the residences and office has been spread out over a period of years and at this time the government has an investment of about \$80,000 at this port of entry.



Canadian Customs and Immigration Office at Morgan . . .

In the picture above you see the office and residence on the Canadian side of the line at Morgan. On the left hand side of the picture is a Saskatchewan

"Welcome" sign. This office and residence was served electricity by the Big Flat Electric Cooperative prior to the Canadian Rural Electric Program.



Canadian Customs and Immigration North of Turner, Montana

Welcome to Canada, but required to stop at this Customs and Immigration Office located on the Canadian side of the line at the Turner port of entry. This office and residence received elec-

tricity from the Canadian Rural Electric Service at about the same time the Big Flat Electric was building line to serve the residences on the U. S. side.

BOARD OF DIRECTORS

District 1	Duane Klindworth
District 2	Alan Van Voast
District 3	Alan Wasson, President
District 4	Betty Campbell, Sec. /Treas.
District 5	Roger Solberg, Vice President
District 6	Patty Quisno
District 7	Kevin Koss

General Manager: Gretchen Boardman



BIG FLAT ELECTRIC COOPERATIVE

SERVING BLAINE, PHILLIPS AND VALLEY COUNTIES

P.O. BOX 229 • MALTA, MT 59538 • WWW.BIGFLATELECTRIC.COM

A Touchstone Energy™ Partner
The power of human connections

CONNECT WITH US
OPEN WEEKDAYS 8 A.M. TO 5 P.M.

333 S 7TH ST W
MALTA, MT 59538
(406) 654-2040

AFTER HOURS OUTAGE:
(406) 654-7400

PAYMENT OPTIONS:
1-833-368-2470 or
bigflatelectric.com