

BIG FLAT NEWS



September 2023

www.bigflatelectric.com



EXCELLENCE

BIG FLAT ELECTRIC CO-OP SUPPORTS LOCAL COUNTY FAIRS AND 4-H YOUTH

BIG Flat Electric Cooperative is a proud supporter of the Phillips and Blaine County fairs held in August. The co-op congratulates all the hard work the 4-H youth put into their projects. Pictured are the animals purchased by Big Flat;

Kennedy Simonson shows her steer and Erin Solberg shows her pig at the Phillips County Fair. Isaac Klindworth shows his pig at the Blaine County Fair.

Beef and pork bundles will be given away at the annual meeting.



Isaac Klindworth

SAVE
THE
DATE



BIG FLAT ELECTRIC
COOPERATIVE

76TH ANNUAL MEETING

OCTOBER 14, 2023 ■ MALTA HIGH SCHOOL AUDITORIUM

REGISTRATION: 9 A.M. MEETING: 10 A.M.

BIG FLAT ELECTRIC COOPERATIVE

MEET OUR BOARD OF DIRECTORS

PART 1

PART 2 COMING
NEXT MONTH

BIG Flat Electric Cooperative's Board of Directors play a very important role in your cooperative. I have asked each of the Board members to write a short letter explaining how they became a board member, how long

they have been a board member, and what are/ is their main goal(s) as a board member. Get to know your Board of Directors and understand the vital part they play in keeping Big Flat Electric running smoothly and effectively. BME

ALAN WASSON

PRESIDENT



What made you decide to become a board member?

My dad served on the Big Flat Board for many years and

the discussions with him and several other directors that he served with were always very interesting. Alfred Grabofsky served for 18 years after my dad retired, and he asked if I would be interested in serving. I appreciated that opportunity.

How long have you been a board member?

I am finishing my 21st year.

What are/is your main goal(s) serving as a board director?

My goals, as are those of every member on the board, are to supply the most economical and efficient electricity to owners. As a zero-growth co-op, that is a big ask of members of Big Flat Electric Co-op.

ROGER SOLBERG

VICE PRESIDENT



What made you decide to become a board member?

In 2002, I was asked by my neighbor, Bill Goertz, if I would be interested in running for the Big Flat board of directors. Bill was the director for the North Malta district at the time, and he had decided not to seek re-election. My understanding of Big Flat as a member-owned cooperative was limited at the time. I had attended several annual meetings of the Big Flat Electric Cooperative, and I had also participated in the Young Members program through the Montana Electric Cooperatives' Association, where I learned the basics of how electrical cooperatives operate. However, I had never considered the idea of becoming a board member.

My dad, Arthur Solberg, had served on the Big Flat Board for a number of years when I was a kid. He also encouraged me to consider running for the board position. With encouragement from both Bill and my dad, I decided to run, and I expected it to be a learning experience.

How long have you been a board member?

I have now been a board member for 21 years. And it most certainly has been a learning experience. More specifically, it has been a tremendous opportunity to be involved in the many decisions that must be made to keep Big Flat a financially sound cooperative in an ever-changing power industry. It is a continual learning process for the members of the board, and we are very fortunate to have excellent leaders and experts in place at our Big Flat Electric Cooperative, and at Central Montana G & T, who help us navigate through complex and difficult decisions that

must be made.

What are/is your main goal(s) serving as a board director?

My main goal as a director serving our members is to make decisions that benefit our members. Thus, the two most important goals always need to be to provide reliable power to our members while keeping rates affordable. Every one of Big Flat's members is an owner of the cooperative. I represent these member-owners, and I want to make wise business decisions.

The electrical industry has seen many changes in my 21 years on the board. We are currently seeing a shift away from petroleum-based fuels for generation, and a push toward renewable energy. Whether we agree with these changes or not, as the industry shifts, we must adapt to these changes. As electric vehicles and zero-emissions energy become federally mandated, we need to continue to make business decisions that best benefit our members.

BOARD OF DIRECTORS CONTINUED NEXT PAGE

MEET OUR BOARD OF DIRECTORS *cont.*

KEVIS KOSS

BOARD MEMBER



I joined the board in October of 2020. I was approached about filling the remaining term of a friend and neighbor who passed away. I don't know if obligation or duty are the right terms, but I felt like someone needed to step up considering the current energy climate, and the fact I've been a lifelong

customer, it wasn't a stretch. By the time that remaining term was over, my interest in the board position had more than just been piqued. I was also totally impressed by the people who work for your electric co-op. So much so that I ran for a new term and, thankfully, was elected to continue serving as a board member.

I'm not sure I had a goal back then, except to do the best job I could as a member of the board. Now my goal is to continue to strengthen the reliability of our system with the team of great people I have the privilege of working

with. We all know what the cost of operating a business has done lately. The maintenance and upgrades within our system, and improving reliability, are very costly. Big Flat Electric is not immune to the substantial delays in getting parts and supplies. The expenses and wait times are major hurdles to cross, while at the same time keeping rates stable. In other words, what I believe is a common goal, is to keep power on as close to 100 percent of the time, while not affecting your pocketbook, like everything else is doing.

COOPERATIVE
POOL DAY
A SUCCESS

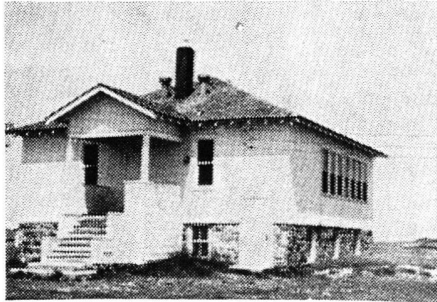
YOUNGSTERS were treated to a free day at the Malta and Harlem pools this summer. Big Flat Electric and Triangle Communications teamed together to sponsor the swim days. We hosted a free admission and a Popsicle at the Harlem pool on July 11. At the Malta swimming pool, children received a free pass and a concession voucher on July 24. RM



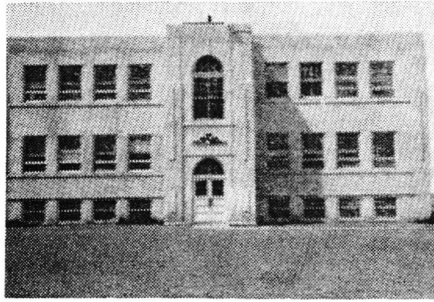
AUGUST 1964: *BFEC NEWSLETTER*

Big Flat Serves 22 Rural Schools With Electricity

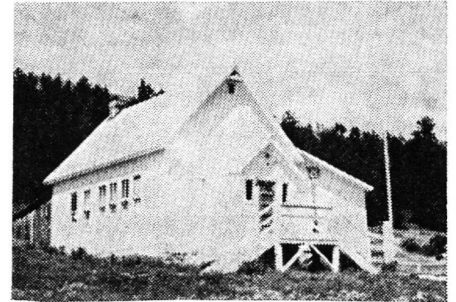
PART 2: PART 1 WAS IN THE AUGUST EDITION, MORE COMING IN THE FOLLOWING MONTHS



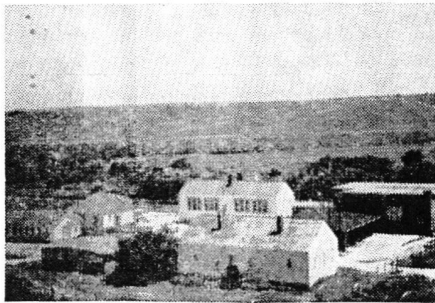
HERMANSON School District No. 40, Phillips County. Teacher, Mrs. David Oscarson; Students, 8; School Board, Wayne Jacobs, John Flansaas, Celius Severeide; Clerk, Mrs. Celius Severeide.



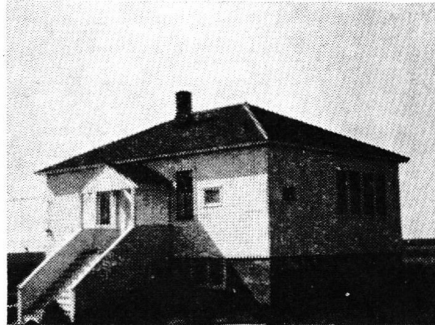
HOGELAND School District No. 32, Blaine County. Erected 1937; Teaching staff, 8; Students, 85; School Board, Reuben Johnson, Ordell Klindworth, Richard Hamilton; Clerk, Mrs. Adrian Olszewski.



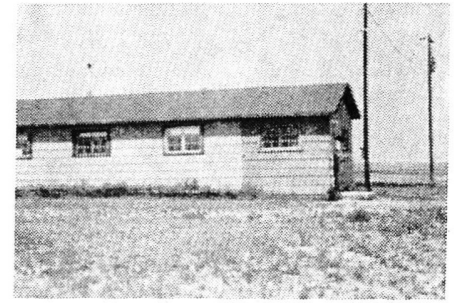
LANDUSKY School District No. 7, Phillips County. Teachers, Mr. and Mrs. James Kolp; Students, 21; School Board, Winston Mitchell, Ray Williams, Arlida Kolczak; Clerk, Mrs. Arthur Phillips.



LODGEPOLE School District No. 50, Blaine County. Teaching Staff, 5; Students, 115; School Board, Dave Hawley, Jr., Robert King, Leonard Erickson; Clerk & Administrator, James Sosalla.



LORING School District No. 47, Phillips County. Teacher, Jim LaPlante; Students, 5; School Board, William Andrews, Iver Johannesen, Mrs. Glen Lovejoy; Clerk, Mrs. Betty Dyrdahl.



MIDALE School District No. 1-A, Phillips County. Teacher, James Thistle; Students, 8; School Board, Ray Cummings, Lloyd Knudsen, Fred Emond, Clerk, Mrs. Joseph Peigneux.

BOARD OF DIRECTORS

District 1	Duane Klindworth
District 2	Alan Van Voast
District 3	Alan Wasson, President
District 4	Betty Campbell, Sec. /Treas.
District 5	Roger Solberg, Vice President
District 6	Patty Quisno
District 7	Kevin Koss

General Manager: Gretchen Boardman



BIG FLAT ELECTRIC COOPERATIVE

SERVING BLAINE, PHILLIPS AND VALLEY COUNTIES

P.O. BOX 229 • MALTA, MT 59538 • WWW.BIGFLATELECTRIC.COM

A Touchstone Energy™ Partner
The power of human connections

CONNECT WITH US

OPEN WEEKDAYS 8 A.M. TO 5 P.M.

333 S 7TH ST E
MALTA, MT 59538
(406) 654-2040

**AFTER HOURS
OUTAGE:**
(406) 654-7400

PAYMENT OPTIONS:
1-833-368-2470 or
bigflatelectric.com